

Fort Riley iSportsman Guidance

The Fort Riley Recreationist's basic guide for the new iSportsman Operating System

1. All persons recreating in a Training Area on Fort Riley must check in and out of the area on a daily basis. Check in-out procedures will be done through the Fort Riley *iSportsman* website.
2. You may access the *iSportsman* page (<http://www.fortriley.isportsman.net>) and register. Simply enter basic contact data and you will receive a unique UserID, password, and PIN # for your account.
3. Upon registration, you will be able to check-in/check-out on a daily basis using any personal device with internet access OR by visiting the *iSportsman* Kiosk (located at 1st Division Road and Vinton School Road) 24 hours a day OR visit the Environmental Division office in building 407 during normal business hours. You will be required to fill out the same information about your outdoor recreational activities on Fort Riley as was previously required at the hunter check stations.

Other requirements:

1. Obtain a free Fort Riley Recreation Motor Vehicle Permit to be displayed on your dashboard while recreating. These can be printed out at home from the iSportsman website under "Regulations" or are available at any of the 11 information stations (see map).
2. Check "Open Areas" on iSportsman or by calling the open areas hotline at 785-239-6669 to determine if the area you plan to visit is open for recreation. Areas "A-Q" if open, can be accessed one hour before sunrise and one hour after sunset.

For assistance with iSportsman or for general questions contact the Environmental Division at 407 Pershing Court or call 785-239-6211.

Fort Riley Bird Checklists are available on iSportsman, as well as detailed maps, complete regulations and other information regarding recreation.

Birding Trails and Hot Spots at Fort Riley, KS



Photo by: Bob Gress

FORT RILEY MILITARY RESERVATION is located in northeastern Kansas between Milford Lake and Tuttle Creek Lake. It's primary purpose is military training. Portions of the reservation are available for wildlife viewing (**when and where that activity is compatible with the military training mission**). At times over 80,000 of the reservation's 101,000 acres are available for wildlife viewing.

Fort Riley is situated within the range of over 300 species of birds, 250+ of these species have been documented on the installation. Supporting this diversity is a variety of habitat types including large tracts of native tallgrass prairie, woodlands and wetlands. Hiking trails, numerous creeks, Milford Lake and the Kansas & Republican Rivers are among many of the features that contribute to excellent birding at Fort Riley.

5

3-Mile Wetland

This wetland is located in training area "7A" near 3-Mile Creek and the Kansas River. It is surrounded by timber, and has mostly open water. Waterfowl, shorebirds and swallows are often present here.

6

Foxtrot Wetlands

With a combination of grassland, cropland and woodland, this wetland offers birders the chance to view sparrows, wading birds, and waterfowl. It is located in training area 28 in area "F," 1/4 mile west of Wildcat Creek Road.

7

Madison Creek Wetland

This wetland is located in training area 71 in "K". Dense vegetation in and around these wetland cells provides habitat for marsh wrens, bitterns and the occasional ibis.

8

Military Marina

Located in training area 64 in area "G," The Military Marina offers birdwatchers the chance to observe terns, ospreys and loons, shorebirds and waterfowl. The entrance to the marina is approximately a mile west of the Hwy 82 and 77 intersection.

Much of the area north of Vinton School Road contains large tracts of native tallgrass prairie. This is prime habitat for the Henslow's sparrow and greater prairie-chicken (see map for specific areas). Many other prairie species utilize this habitat including upland sandpipers, grasshopper sparrows, meadowlarks, dickcissels, Bell's vireos and loggerhead shrikes. Short-eared owls, burrowing owls, prairie falcons, peregrine falcons, rough-legged hawks and American golden plovers may also be present during certain times of the year.



From top: upland sandpiper, Henslow's sparrow, scissor-tailed flycatcher. Photos by Bob Gress.



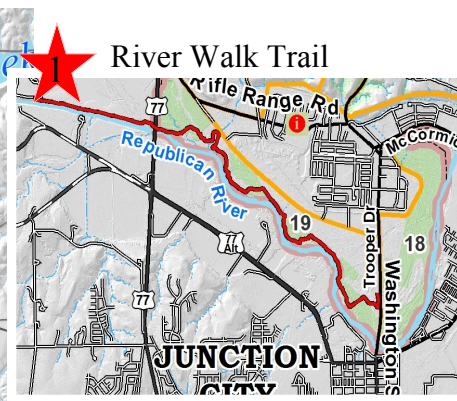
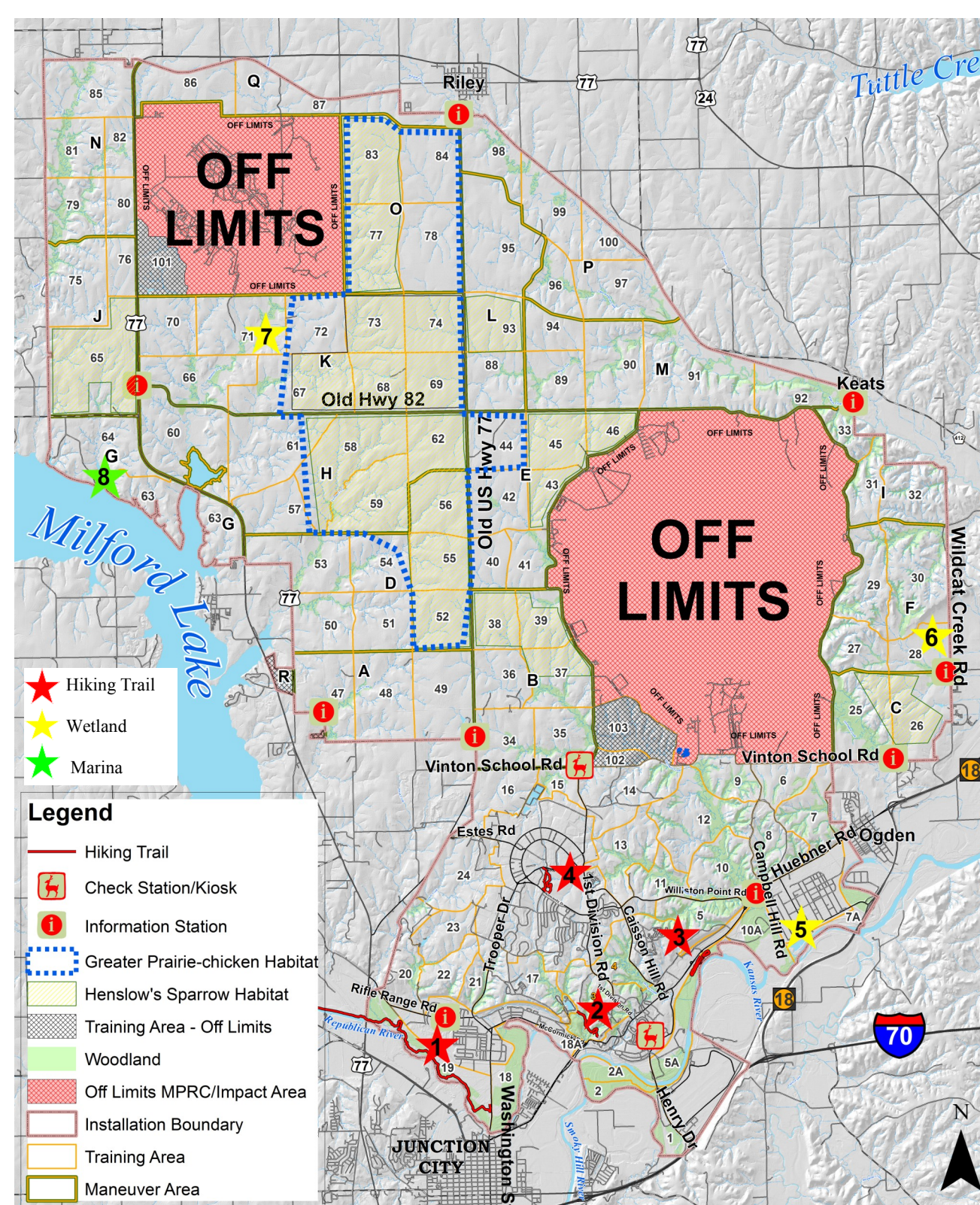
From top left: Baltimore oriole, indigo bunting, white-breasted nuthatch. Photos by Deb Clark.

iSportsman



Directorate of Public Works
Fort Riley, Kansas



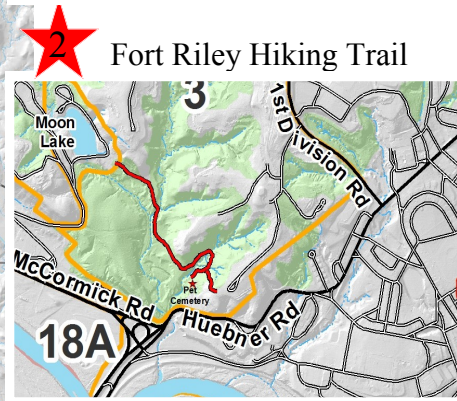


1 River Walk Trail

1 **River Walk Trail**
 Length: 4.8 miles (one way)
 Surface: limestone millings



The River Walk Trail is a level terrain trail that follows the Republican River in training area 19 off Trooper Drive, continuing nearly to the outlet tubes below Milford Lake. The Fort Riley portion of the trail ends at the Highway 77 bridge. Much of the trail is forested with occasional views of the Republican River. There are several rough access trails that lead down to sandbars on the Republican River. Common birds on this trail include shorebirds, indigo buntings, belted kingfishers, herons, and cliff swallows. Wintering bald eagles are also common on this stretch of the river. Less common birds include the Mississippi kite, merlin and osprey.

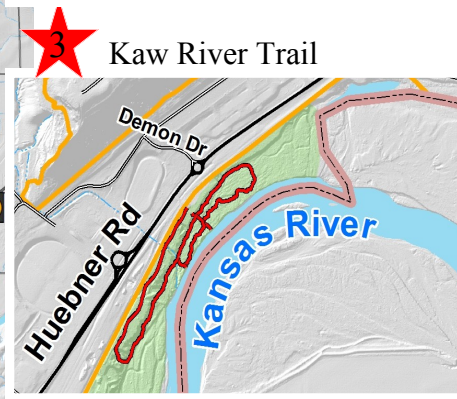


2 Fort Riley Hiking Trail

2 **Fort Riley Hiking Trail**
 Length: 1.8 miles (one way)
 Surface: dirt/grass (rough)



The Fort Riley Hiking Trail connects Moon Lake, the pet cemetery and the Outdoor Chapel in training area 3. Parking for the trail is located at the SE end of Moon Lake, and limiting parking is available by the pet cemetery. An observation platform is located at the Outdoor Chapel trailhead with a view of the main post cemetery bald eagle nest. While common woodland species may be observed here year round, this is an excellent place to observe vireos, tanagers and migrating warblers in the spring.

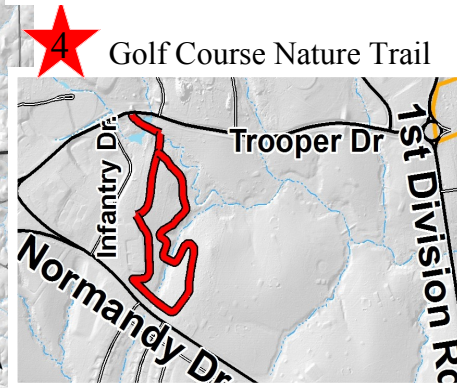


3 Kaw River Trail

3 **Kaw River Trail**
 Length: 1.3 miles (loop)
 Surface: dirt/gravel



This trail is located by the First Territorial Capitol, between Williston Point Road and Caisson Hill Road in training area 5A. Parking is available at the First Territorial Capitol. This trail is level except for a steep set of stairs leading down to the trail. Woodland species, water birds, and migrating warblers are common, but also watch for the pileated woodpecker, rusty blackbird and bald eagle.



4 Golf Course Nature Trail

4 **Golf Course Nature Trail**
 Length: 1.1 mile (loop)
 Surface: paved asphalt



Located on Custer Hill near the golf course, this trail can be accessed from Infantry Drive off Trooper Drive. Visit the bird viewing area constructed in 2012 along the wide asphalt trail. Woodpeckers, blue jays, black-capped chickadees, vireos, warblers, towhees, nuthatches, and finches may be seen from this trail.